

→ bringing to bare the mass of the forest in the garden.

Landscape structuring the forest and what it will be, not the other way around.

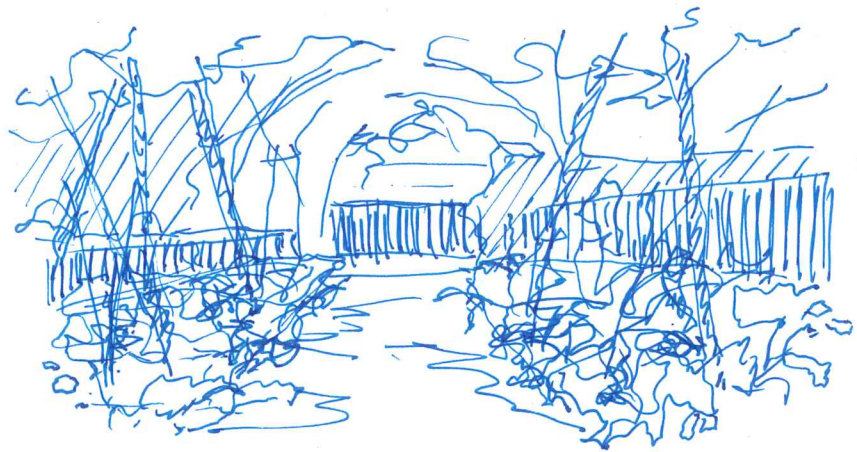
- How to utilize the maintenance process rather than planting to initiate a spatial outcome.
- The virdic = the tectonic of vegetation, form and process simultaneously.
- Form is a moment in process, always.
- design and maintenance are tied together.  
\* effect.

### The Millie garden:

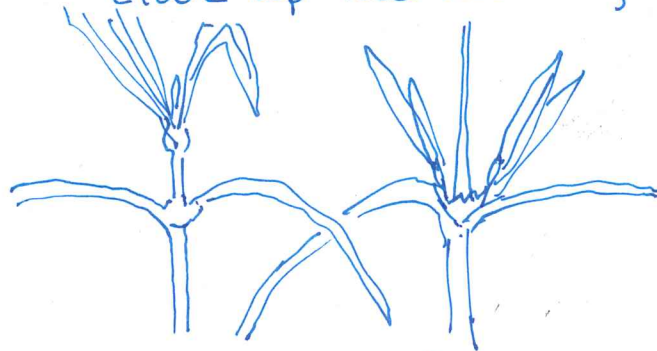
- architectural analog; to use trees and plants as if they're pieces of architecture instead of things with architectural ~~form~~\* we disembody them with their actual logic.
- They had to replant the row of trees three times.
- The form of the tree is a response to effect of its terrestrial conditions.
- Chasing the past vs. reacting to the future.

### Marna's Grove:

- Sven Ingvar Andersson educated during the modernist period.
- The picturesque character of modernism.



- one of the little garden rooms, where odd individuals have dropped out. → letting a new form come through.
- Spaces emerge through maintenance.
- John Macarthur - an architectural historian known for his work with the picturesque in architecture. (look up the book)



Traumatic reiteration.

- removal of the epicormical stem with the hormone that suppresses sidebranching → greater division.
- The virdic: comes from latin meaning green, blooming, flourishing. To increase

when you prune the hedge gets denser and denser and denser.

→ Growth is the material.