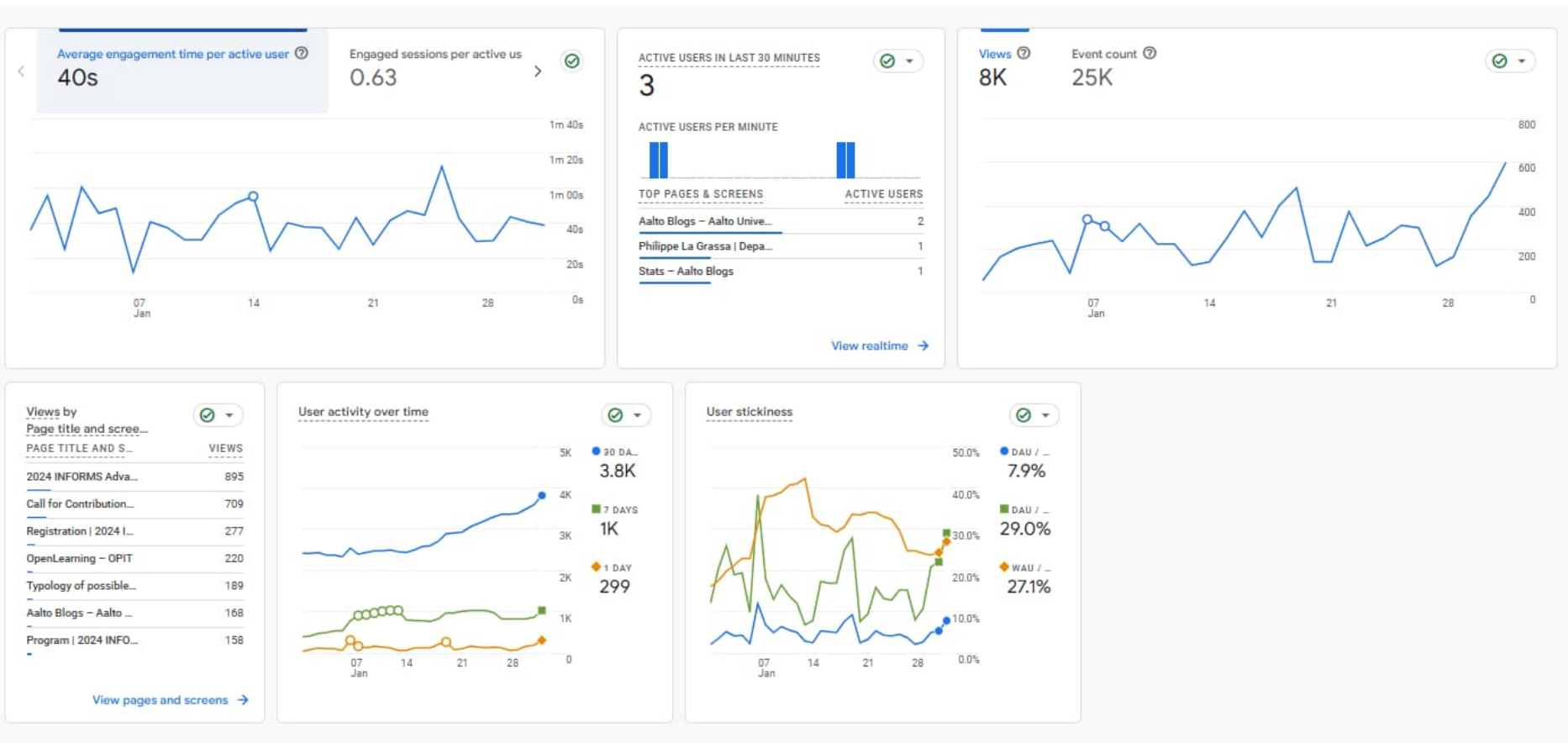


Stats January 2024



<div> <input type="checkbox"/> <div>Page path and screen class ▾</div> </div> <div>+</div>		<div> <div>↓ Views</div> <div>100% of total</div> </div>	<div> <div>Active users</div> <div>100% of total</div> </div>	<div> <div>Views per active user</div> <div>Avg 0%</div> </div>	<div> <div>Average engagement time per active user</div> <div>Avg 0%</div> </div>	<div> <div>Event count All events ▾</div> <div>100% of total</div> </div>
<div> <input type="checkbox"/> <div>Total</div> </div>		<div> <div>8,027</div> <div>100% of total</div> </div>	<div> <div>3,850</div> <div>100% of total</div> </div>	<div> <div>2.08</div> <div>Avg 0%</div> </div>	<div> <div>40s</div> <div>Avg 0%</div> </div>	<div> <div>24,740</div> <div>100% of total</div> </div>
<div> <input checked="" type="checkbox"/> <div>1 /ada2024/</div> </div>		<div> <div>895 (11.15%)</div> </div>	<div> <div>479 (12.44%)</div> </div>	<div> <div>1.87</div> </div>	<div> <div>29s</div> </div>	<div> <div>2,850 (11.52%)</div> </div>
<div> <input type="checkbox"/> <div>2 /ada2024/call-for-contributions/</div> </div>		<div> <div>709 (8.83%)</div> </div>	<div> <div>385 (10%)</div> </div>	<div> <div>1.84</div> </div>	<div> <div>46s</div> </div>	<div> <div>2,131 (8.61%)</div> </div>
<div> <input type="checkbox"/> <div>3 /ada2024/registration/</div> </div>		<div> <div>277 (3.45%)</div> </div>	<div> <div>177 (4.6%)</div> </div>	<div> <div>1.56</div> </div>	<div> <div>33s</div> </div>	<div> <div>740 (2.99%)</div> </div>
<div> <input type="checkbox"/> <div>4 /icbem2024/</div> </div>		<div> <div>249 (3.1%)</div> </div>	<div> <div>80 (2.08%)</div> </div>	<div> <div>3.11</div> </div>	<div> <div>40s</div> </div>	<div> <div>683 (2.76%)</div> </div>
<div> <input type="checkbox"/> <div>5 /opit/openlearning-site-policy-agreement/</div> </div>		<div> <div>220 (2.74%)</div> </div>	<div> <div>158 (4.1%)</div> </div>	<div> <div>1.39</div> </div>	<div> <div>1s</div> </div>	<div> <div>702 (2.84%)</div> </div>
<div> <input type="checkbox"/> <div>6 /writingaboutdesign/2020/11/12/typology-of-possible-research-findings-i-e-contributions/</div> </div>		<div> <div>189 (2.35%)</div> </div>	<div> <div>147 (3.82%)</div> </div>	<div> <div>1.29</div> </div>	<div> <div>49s</div> </div>	<div> <div>656 (2.65%)</div> </div>
<div> <input type="checkbox"/> <div>7 /ada2024/program/</div> </div>		<div> <div>158 (1.97%)</div> </div>	<div> <div>108 (2.81%)</div> </div>	<div> <div>1.46</div> </div>	<div> <div>11s</div> </div>	<div> <div>408 (1.65%)</div> </div>
<div> <input type="checkbox"/> <div>8 /</div> </div>		<div> <div>153 (1.91%)</div> </div>	<div> <div>113 (2.94%)</div> </div>	<div> <div>1.35</div> </div>	<div> <div>7s</div> </div>	<div> <div>495 (2%)</div> </div>
<div> <input type="checkbox"/> <div>9 /ada2024/keynotes/simon-french/</div> </div>		<div> <div>120 (1.49%)</div> </div>	<div> <div>86 (2.23%)</div> </div>	<div> <div>1.40</div> </div>	<div> <div>14s</div> </div>	<div> <div>331 (1.34%)</div> </div>
<div> <input type="checkbox"/> <div>10 /writingaboutdesign/2020/11/30/how-to-define-a-research-question-or-a-design-problem/</div> </div>		<div> <div>120 (1.49%)</div> </div>	<div> <div>100 (2.6%)</div> </div>	<div> <div>1.20</div> </div>	<div> <div>41s</div> </div>	<div> <div>439 (1.77%)</div> </div>
<div> <input type="checkbox"/> <div>11 /ada2024/venue-travel/</div> </div>		<div> <div>111 (1.38%)</div> </div>	<div> <div>81 (2.1%)</div> </div>	<div> <div>1.37</div> </div>	<div> <div>21s</div> </div>	<div> <div>287 (1.16%)</div> </div>
<div> <input type="checkbox"/> <div>12 /ada2024/contact/</div> </div>		<div> <div>106 (1.32%)</div> </div>	<div> <div>77 (2%)</div> </div>	<div> <div>1.38</div> </div>	<div> <div>30s</div> </div>	<div> <div>296 (1.2%)</div> </div>
<div> <input type="checkbox"/> <div>13 /databases/</div> </div>		<div> <div>100 (1.25%)</div> </div>	<div> <div>74 (1.92%)</div> </div>	<div> <div>1.35</div> </div>	<div> <div>12s</div> </div>	<div> <div>366 (1.48%)</div> </div>
<div> <input type="checkbox"/> <div>14 /ada2024/keynotes/kari-renko/</div> </div>		<div> <div>97 (1.21%)</div> </div>	<div> <div>77 (2%)</div> </div>	<div> <div>1.26</div> </div>	<div> <div>14s</div> </div>	<div> <div>261 (1.05%)</div> </div>
<div> <input type="checkbox"/> <div>15 /ityopintoblogi/2015/11/22/puljausohje-kandiopiskelijalle-miten-siirryn-opiskelemaan-maisteriopintoja-vaikkei-kandi-ole-valmis/</div> </div>		<div> <div>97 (1.21%)</div> </div>	<div> <div>85 (2.21%)</div> </div>	<div> <div>1.14</div> </div>	<div> <div>29s</div> </div>	<div> <div>352 (1.42%)</div> </div>
<div> <input type="checkbox"/> <div>16 /ada2024/keynotes/</div> </div>		<div> <div>96 (1.2%)</div> </div>	<div> <div>62 (1.61%)</div> </div>	<div> <div>1.55</div> </div>	<div> <div>11s</div> </div>	<div> <div>207 (0.84%)</div> </div>
<div> <input type="checkbox"/> <div>17 /ada2024/social-events/</div> </div>		<div> <div>90 (1.12%)</div> </div>	<div> <div>72 (1.87%)</div> </div>	<div> <div>1.25</div> </div>	<div> <div>51s</div> </div>	<div> <div>225 (0.91%)</div> </div>
<div> <input type="checkbox"/> <div>18 /ada2024/accommodation/</div> </div>		<div> <div>85 (1.06%)</div> </div>	<div> <div>70 (1.82%)</div> </div>	<div> <div>1.21</div> </div>	<div> <div>35s</div> </div>	<div> <div>200 (0.81%)</div> </div>
<div> <input type="checkbox"/> <div>19 /ada2024/keynotes/judit-lienert/</div> </div>		<div> <div>84 (1.05%)</div> </div>	<div> <div>67 (1.74%)</div> </div>	<div> <div>1.25</div> </div>	<div> <div>16s</div> </div>	<div> <div>218 (0.88%)</div> </div>
<div> <input type="checkbox"/> <div>20 /writingaboutdesign/2020/12/11/how-to-get-access-to-articles-that-are-not-open-access/</div> </div>		<div> <div>82 (1.02%)</div> </div>	<div> <div>75 (1.95%)</div> </div>	<div> <div>1.09</div> </div>	<div> <div>41s</div> </div>	<div> <div>341 (1.38%)</div> </div>
<div> <input type="checkbox"/> <div>21 /icbem2024/call-for-abstracts/</div> </div>		<div> <div>78 (0.97%)</div> </div>	<div> <div>26 (0.68%)</div> </div>	<div> <div>3.00</div> </div>	<div> <div>53s</div> </div>	<div> <div>212 (0.86%)</div> </div>
<div> <input type="checkbox"/> <div>22 /nofoma2023/</div> </div>		<div> <div>78 (0.97%)</div> </div>	<div> <div>47 (1.22%)</div> </div>	<div> <div>1.66</div> </div>	<div> <div>12s</div> </div>	<div> <div>255 (1.03%)</div> </div>
<div> <input type="checkbox"/> <div>23 /writingaboutdesign/2020/10/27/writing-a-good-storyline-for-a-thesis-or-an-article/</div> </div>		<div> <div>74 (0.92%)</div> </div>	<div> <div>57 (1.48%)</div> </div>	<div> <div>1.30</div> </div>	<div> <div>1m 00s</div> </div>	<div> <div>258 (1.04%)</div> </div>
<div> <input type="checkbox"/> <div>24 /studentambassadors/2021/01/24/where-to-look-for-a-thesis-position/</div> </div>		<div> <div>65 (0.81%)</div> </div>	<div> <div>59 (1.53%)</div> </div>	<div> <div>1.10</div> </div>	<div> <div>32s</div> </div>	<div> <div>276 (1.12%)</div> </div>
<div> <input type="checkbox"/> <div>25 /brainstim2023/</div> </div>		<div> <div>59 (0.74%)</div> </div>	<div> <div>51 (1.32%)</div> </div>	<div> <div>1.16</div> </div>	<div> <div>15s</div> </div>	<div> <div>215 (0.87%)</div> </div>